

*Daintree*   
RESIDENCE

*Lush side of life*





FIND YOUR PLACE

## IN THE SHADE OF A RAINTREE

Serenely tucked along a quiet enclave, dappled with sunlight and shadow, a lush landmark stands proud. Here, light, air, space and greenery converge to create an expansive rainforest canopy for living at its most luxurious.

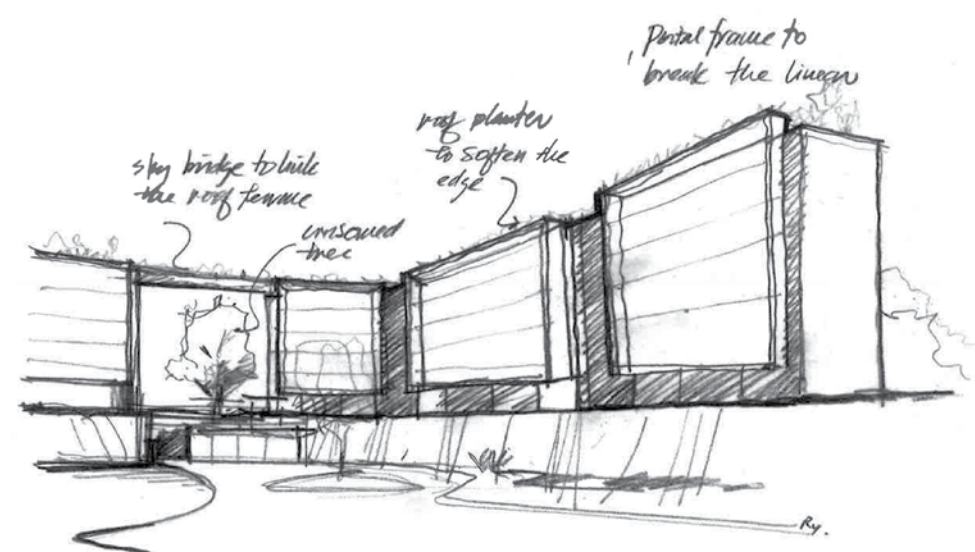
More than just a home, it is an enchanted wonderland where nature is your playground – an urban oasis far removed from the cares of the world, yet close to all its conveniences, with the Beauty World MRT station just a short walk away.

The exclusive residence of choice, Daintree Residence invites you to find your place on the lush side of life.





Artist's Impression



## AN ARCHITECTURAL MASTERPIECE THAT IS NATURALLY ELEGANT

It is said that exquisite architecture transforms those who live within it. Sleek and sculptural, the articulated façade of Daintree Residence is reminiscent of the terrain of a quarry, creating a stunning composition that is technically cutting-edge yet naturally elegant. Showcasing the rippling effect of the quarry's vertical topography, the artfully contoured façade elegantly sprouts up a Rainforest and a Valley, seamlessly integrating into the natural surrounds.

Truly pushing the boundary of design, its form and function captivate with an arresting visual identity. Five storeys in height with just 327 exclusive apartments, linked by a 330-metre-long TreeTop Walk that is teeming with lifestyle facilities to pamper your every need.





COME HOME TO THE  
LUSH SIDE OF LIFE

Cross the threshold and soak in tranquility via the Valley Boulevard. First impressions are everything, and arriving at the Lantern Arrival is as impressive as it is welcoming.

From ambiance to aesthetics, thoughtful design features such as the Water Terrace, inspired landscaped open spaces and refined materials, convey a distinct sense of style.



EVERY ARRIVAL IS AN  
ESCAPE TO INDULGENCE



*Valley*

Be greeted by pockets of retreat and recreational facilities designed to soothe the senses. Take in the luxuriant surrounds of a Valley. Refresh yourself in the stunning 25-metre Infinity Pool by the Valley Club. Bask in the sublimity of resort living far from the whirl of the city.

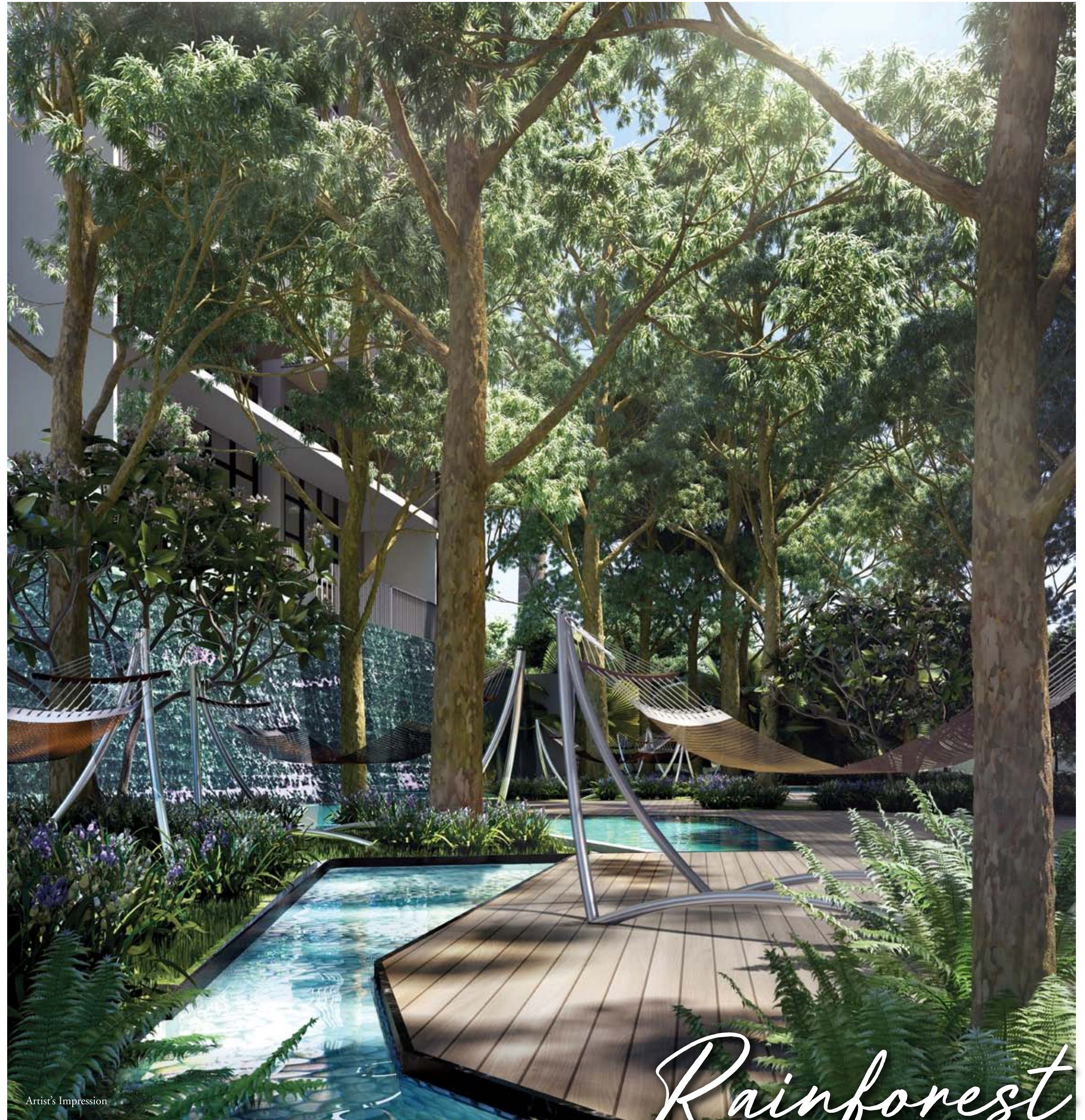
As the sun sets, take a leisurely stroll down the Lantern Valley. Not only is it mesmeric, it is truly magical. The glowing lantern puts the magnificence of a tropical rainforest in a new light.



GET SET TO FIND YOUR  
BREATHING SPACE AT THE  
HAMMOCK BAY



Infuse a little play into your day. Get refreshed, get excited and have a getaway at the enchanted Hammock Bay for some alfresco fun and relaxation. When you are living in a rainforest, feeling at one with a surrounding vista of verdant greenery is effortless.



Artist's Impression

*Rainforest*



YOUR 50-METRE LEISURE POOL IS ABUNDANT IN  
REVITALISING RESPITES

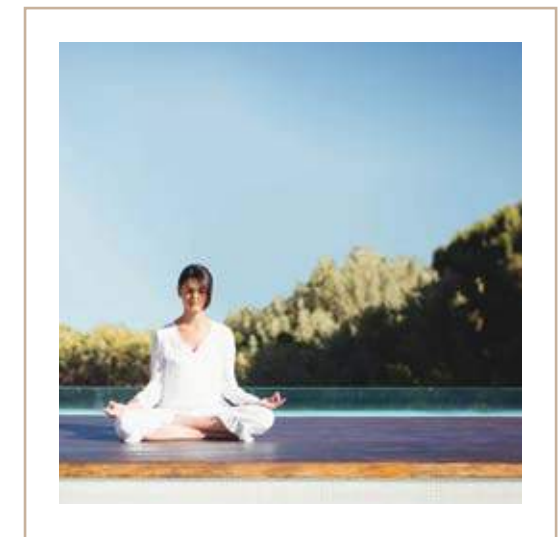






Artist's Impression

A SPATIAL LIVING SANCTUARY TO  
LET LIFE FLOW



Within waving distance of the Heritage Raintree, the soaring and picturesque Outpost inspires a calming connection with nature. Overlooking the shimmering blue waters of the 50-metre Leisure Pool, this bold interpretation of entwined living with a 330-metre TreeTop Walk lets you take in the magnificent panorama of the Valley and the Rainforest. This experience is second to none.



NURTURE THE GOOD LIFE ON  
THE HERITAGE LAWN



The beautiful lawn of Daintree Residence is the proud home of the Heritage Raintree, a majestic green landmark that echoes an era of timeless elegance, and a heritage of refined living that nurtures the good life. A welcome respite from the everyday, its mere presence evokes revitalisation and relaxation.







*An Architectural Masterpiece*



# SITE PLAN



## DESIGN EXCELLENCE

The architectural intricacy of Daintree created a seemingly infinite flow of landscape escapes. This has been captured beautifully by its signature identity, a logo that bears the letters "ee" to resemble a pair of concentric loops. It is a design narrative of how the TreeTop Walk links the Valley and Rainforest wings together to create one uninterrupted getaway.

This elegant marque of Daintree Residence – Setia's latest flagship condominium in central Singapore – is a design ID of architectural grace, sophistication and style.



### VALLEY WING

- 1 Grand Entrance
- 2 Smart Storage
- 3 Valley Boulevard
- 4 Water Terrace
- 5 Lantern Arrival
- 6 Green Terrace
- 7 Lantern Valley
- 8 Valley Pavilion
- 9 Verandah
- 10 Infinity Pool
- 11 Bubbling Waters
- 12 Spa Beds
- 13 Valley Deck
- 14 Sun Lawn
- 15 Serenity Walk
- 16 Verdant Garden

### RAINFORREST WING

- 17 Water Bay
- 18 Hammock Bay
- 19 Jacuzzi
- 20 Foot Spa
- 21 Aqua Gym
- 22 Rainforest Deck
- 23 50m Leisure Pool
- 24 Tree Isle
- 25 River Walk
- 26 Cascading Water
- 27 Splash Pool
- RAINFORREST CLUB**
- 28 Rainforest Pavilion
- 29 Gymnasium
- 30 Steam Rooms
- 31 Forest Bridge
- 32 Heritage Lawn
- 33 Hanging Garden
- 34 Heliconia Garden

### OTHERS

- BC Bin Centre
- SS Substation
- GH Guard House
- Water Tank
- Linkway

1 - 5 BASEMENT LEVEL      6 - 34 LANDSCAPE DECK







## EXPERIENCE THE PANORAMIC TREETOP WALK



- 35 Fitness Station
- 36 Meditation Lawn
- 37 Yoga Deck
- 38 Games Station
- 39 Tennis Court

- 40 Chess Garden
- 41 Star Gazing Garden
- 42 Spice & Herb Garden

- 43 Gourmet Pavilion
- 44 Alfresco Pavilion
- 45 Teppanyaki Pavilion

- 46 Canopy
- 47 Canopy Bar
- 48 Cabana
- 49 Cabana Bar
- 50 Outpost

## A HOME WHERE SERENITY TAKES OVER

Weaving together a harmonious environment is the recipe for a life well lived in a calm and peaceful home. Daintree Residence now warmly awaits your discovery.





4-BEDROOM  
ID TREATMENT

Artist's Impression

BEAUTIFULLY FITTED TO  
COMPLEMENT YOUR TASTE

Retreat into your own private sanctuary whenever you want in this beautifully appointed space. With only the finest finishes lending an air of luxury, and top-tier De Dietrich home appliances for your enjoyment.





4-BEDROOM  
ID TREATMENT

ROOM FOR INDIVIDUALITY,  
SPACE FOR  
EVERY NEED

True beauty goes more than skin deep, with top quality sanitary fittings and wares. Thoughtful designs for luxury that coddles you as you prepare for the day ahead, or unwind from it.



REVEL IN THE CONVENIENCE OF  
SMART LIVING

Smart technology doesn't just future-proof your home. It offers you greater security and convenience right now.



SMART SECURITY

Greater peace-of-mind anytime, anywhere — a Biometric Door Lock with advanced fingerprint verification lets you remotely check that it is locked, while the IP camera lets you see what is going on at home. The Intelligent Doorbell with High Definition camera also lets you remotely verify guests even when you are not in.



SMART ASSIST

Book facilities, handle payments, register guests and even allow them secured access to your home, with no hassle.



SMART EXPANSIONS

One of the advantages of smart technology is the option for increasing functionality. You could opt to include extras to control air conditioners and lighting, and add a panic button, smart plugs, smoke detectors, motorised curtains, AV controls, Amazon Alexa and Google Home.

Disclaimer: Each unit will have a Biometric Door Lock, Intelligent IP Camera and Intelligent Doorbell. Smart Expansions and devices can be purchased separately at the buyer's own cost.





ENJOY THE FREEDOM OF  
LARGE  
OPEN SPACES

Find time to slow down and take the opportunity to refresh your body and mind. At Daintree Residence, you are on the lush side of life.



SET IDEALLY IN AN  
EXCLUSIVE ADDRESS

# Daintree

RESIDENCE

## BUKIT TIMAH





# Daintree

RESIDENCE

## SEAMLESSLY CONNECTED A FEW STEPS FROM BEAUTY WORLD MRT STATION

Just a few minutes' walk will take you to the Beauty World MRT station on the Downtown Line, your gateway to seamless connectivity. Reaching the Central Business District is a breeze, ensuring a swift journey to work every day. With a home just outside the city, you can alternate with ease between the buzz of city excitement and the conveniences of nearby Bukit Timah Road.

Conveniently close to amenities, Daintree Residence is a stroll away from Bukit Timah Shopping Centre, Beauty World Plaza and the popular eateries along Cheong Chin Nam Road.



BEAUTY WORLD MRT

### DID YOU KNOW?

Beauty World was a popular market and shopping destination in Singapore during the 1960s. First opened in 1947, the market comprised more than a hundred stalls that sold sundries and everyday essentials. Families also frequented it for its amusement park and to catch getai performances.

After Beauty World was earmarked for redevelopment, several stalls relocated to the Beauty World Centre just opposite its original site.



METHODIST GIRLS' SCHOOL



BUKIT TIMAH PRIMARY SCHOOL



BOTANIC GARDENS



BUKIT TIMAH NATURE RESERVE



BRITISH CLUB



RAFFLES TOWN CLUB



NUS



CHEONG CHIN NAM EATERIES



JURONG LAKE DISTRICT



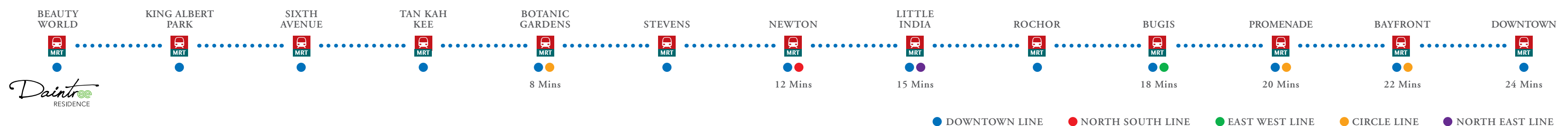
HWA CHONG INSTITUTION



BUKIT TIMAH MARKET & FOOD CENTRE



ORCHARD ROAD







## INTERNATIONAL AWARD-WINNING DEVELOPER

With more than 4 decades of experience, S P Setia has established itself as an award-winning developer with presence in 6 different countries, namely Malaysia, Vietnam, Australia, China, United Kingdom and Singapore.

S P Setia, incorporated in 1974 and listed on the Kuala Lumpur Stock Exchange (now known as Bursa Malaysia) is recognised as a leading listed real estate player with an international portfolio that encompasses townships, eco sanctuaries, luxury enclaves, business parks, commercial and retail as well as integrated and mixed developments.

In Singapore, S P Setia had recently completed and handed over 18 Woodsville and Eco Sanctuary.

Eco Sanctuary was awarded the coveted Gold Winner of FIABCI World Prix d' Excellence Awards under the Sustainable Development Category. To date, S P Setia is a 10-time winner of FIABCI World Prix d' Excellence Awards, which is deemed as the "Oscars" Award in the world real estate industry. This is a rare achievement for any Developer.

Our corporate culture is one that is focussed on the principle of continuous excellence, which exemplifies our vision to be the best in all we do. The Setia brand is synonymous with strength, reliability and the value creation that we bring to all our developments.



10-TIME WINNER  
FIABCI World  
Prix d' Excellence  
Awards

8-TIME WINNER  
AON  
BESTEMPLOYERS  
2013 Best of the Best - Malaysia  
2011 Overall Best - Malaysia



**Setia**