

格美華庭
GRAMERCY
P A R K

S I N G A P O R E

新加坡

A RARE FREEHOLD HOME
IN SINGAPORE'S
PRIME DISTRICT 10

~

新加坡高尚地区(第10邮区)
罕见的永久地契公寓



For those who have achieved, attained and arrived, here's your match of an abode. With an exclusive address on Grange Road in Singapore's prime District 10, Gramercy Park takes its well-deserved place amidst embassies and good class bungalows.

Revel in an uncommon space inspired by stately estates, the perfect canvas for the pure geometry of the residential towers designed by NBBJ, one of the world's most innovative architecture firms.

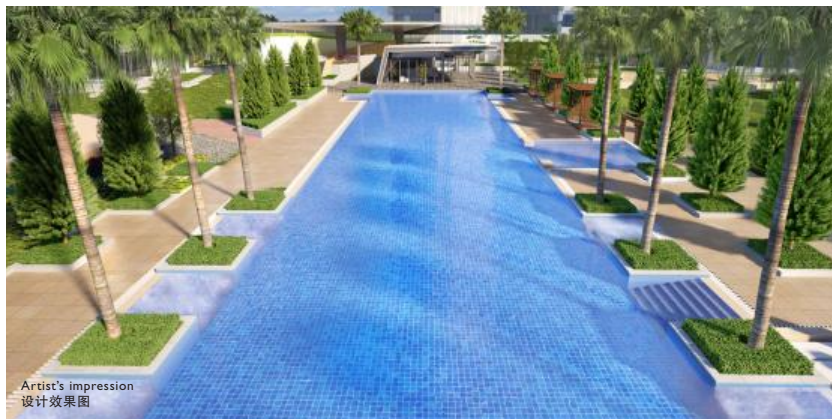
成功人士，这即是您身份的象征。处在新加坡高尚地区(第10邮区)，格兰芝路上的豪华公寓格美华庭四周即是各国的大使馆及优质产业。由世界顶尖著名建筑公司NBBJ设计建造，其大楼的建筑设计仿佛是画布上最精准的几何学，保证让您眼前一亮。

THE LUXURY OF A PRIVATE ESTATE

~ 享受属于您的豪华私人产业 ~



The Grand Lawn 葱绿的大草坪



Club Gramercy and 50-metre Grand Pool 公寓会所和50米泳池

Bask in an expansive estate spanning approximately 15,718 square metres / about 170,000 square feet. At its heart sits the Grand Lawn, perfectly manicured and beautifully illuminated come nightfall. The 50-metre Grand Pool lies alongside and mirrors its symmetry. Club Gramercy, Fitness Studio, Putting Green, Tennis Court and more provide diversion as needed while a lush Wooded Trail completes the vista.

格美华庭的占地面积约15,718平方米/约170,000平方英尺。一旦踏入这里，立即可以感受到其宽大的舒畅感。这里的正中央，即是格美华庭葱绿的大草坪。夜幕低垂时，草坪与灯光的完美结合，再加上处在大草坪旁的50米泳池，即是您完美和谐的画面。公寓会所、健身房、高尔夫球推杆练习区、网球场、悠闲小径及其他的贴心设施，是格美华庭提供您松懈身心、放松心情的完美家园。



Enjoy a selection of 3-metre wide Luxury Parking Lots for your supercars. A concierge is also on hand to welcome both residents and visitors, and to assist with your requests.

享受专为您的豪华轿车打造的3米宽停车位。入口处亦有专人为住户和宾客提供礼宾服务。

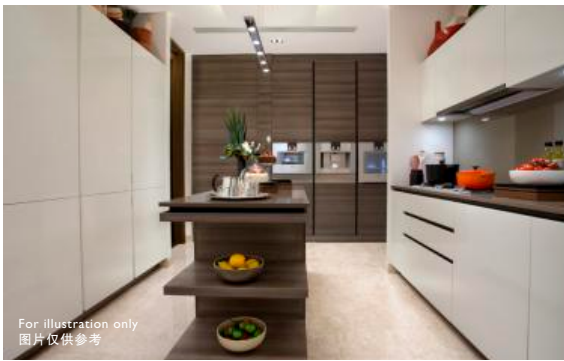


For illustration only
图片仅供参考

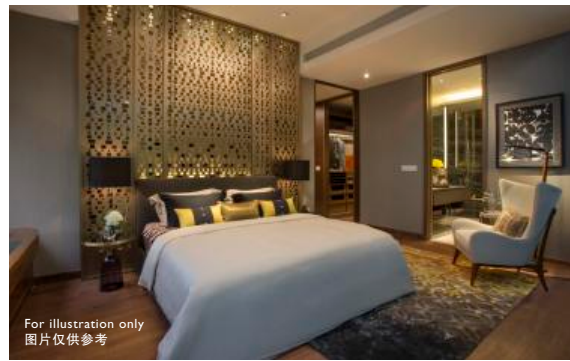
AN ABODE AS LOFTY
AS THE CIRCLES YOU MOVE IN



如梦幻般的豪宅让您梦想成真



For illustration only
图片仅供参考

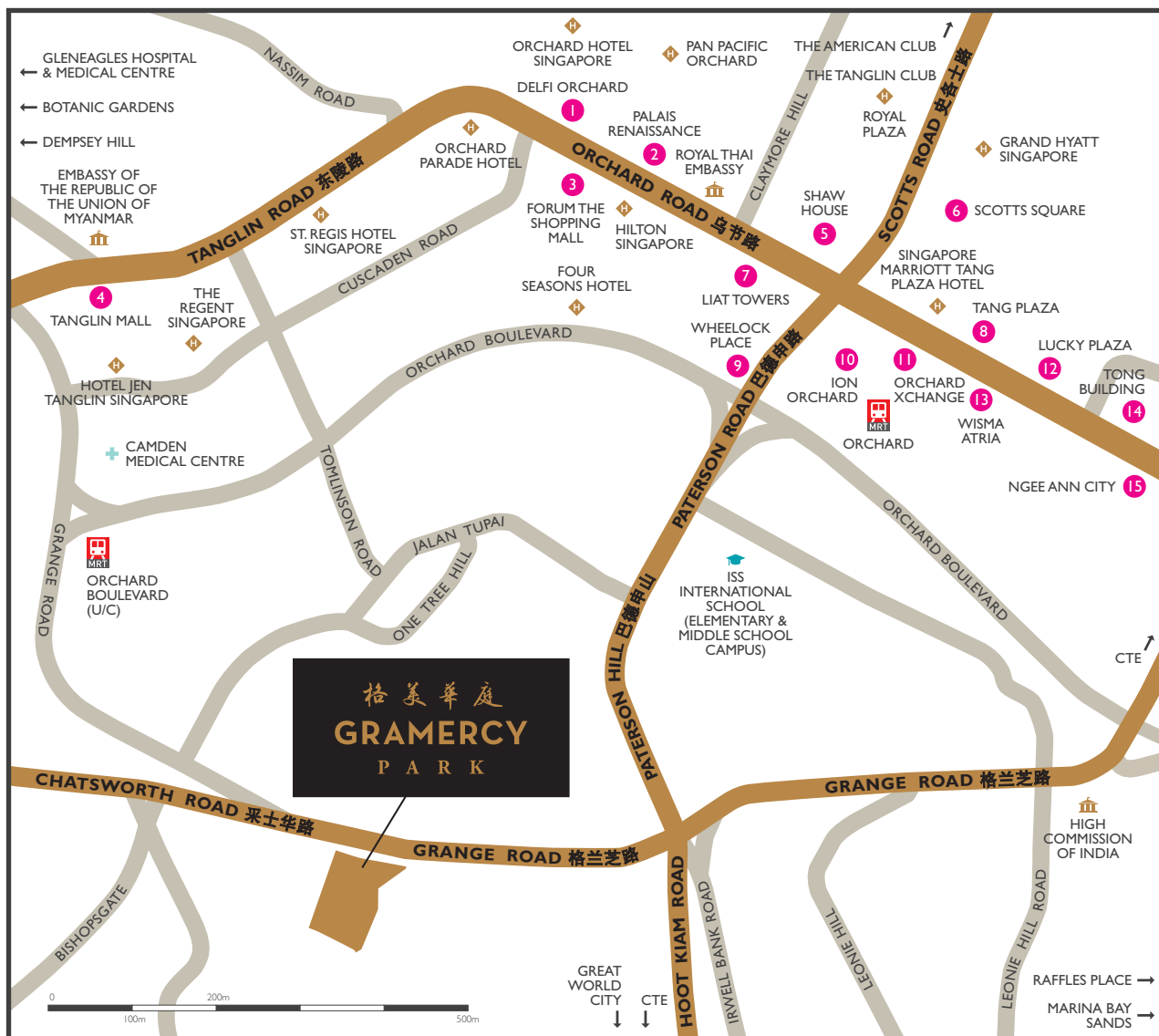


For illustration only
图片仅供参考

With only 174 residences, enjoy absolute exclusivity with a selection of two+study, three- and four-bedroom suites as well as palatial five-bedroom double-storey penthouses. Every suite is adorned with exquisite finishes such as fine marble for the living and dining areas, and American Walnut timber for the bedrooms. The master bath is elegantly fitted with designer collections from Axor by Hansgrohe and Geberit, including a generous double-basin vanity for select suites. Chefs and diners will both delight in the kitchen featuring top-of-the-line appliances from Gaggenau. For select suites, a freestanding island counter houses the wine chiller and serves as a centrepiece too.

格美华庭仅有的174个豪华单位，让您享受专有的隐私。2卧室+书房单位，3和4卧室单位及如同贵族般的5卧室顶层跃层单位，供您选择。每个单位，都经过最精致的装潢 - 客厅及饭厅皆采用大理石，卧室则采用美国黑胡桃木。主人房的浴室备有高贵典雅的配件，如Axor by Hansgrohe和Geberit品牌，特选单位还附有双面盆设计，方便忙碌的都市人。喜爱烹饪，对饮食讲究的您，将对顶级Gaggenau的厨房器具满意。个别特选单位亦附有厨柜岛台，岛台可安装葡萄酒柜，及为厨房装饰。

EVERYTHING YOU WANT
WITHIN VIEW AND REACH
~ 一切您追求的，近在咫尺 ~



SHOPPING & DINING
购物及餐饮设施

- | | | | |
|-----------|---------|--------------|----------|
| 1 乌节达尔斐大厦 | 5 邵氏楼 | 9 会德丰坊 | 13 威士马广场 |
| 2 文艺复兴广场 | 6 史各士广场 | 10 乌节ION大厦 | 14 董大厦 |
| 3 福临购物中心 | 7 烈大厦 | 11 乌节XCHANGE | 15 义安城 |
| 4 东陵坊 | 8 董厦 | 12 幸运商业中心 | |



Short stroll to
ORCHARD ROAD
短程步行至乌节路



Short drive to
MARINA BAY SANDS
短程驱车至滨海金沙



Short drive to
GARDENS BY THE BAY
短程驱车至滨海湾花园

SITE PLAN

~ 平面图 ~



LEGEND 图例

2-BEDROOM + STUDY
2卧室 + 书房单位

3-BEDROOM
3卧室单位

4-BEDROOM
4卧室单位

PENTHOUSE
(5-BEDROOM)
顶层跃层单位(5卧室)

1 Arrival Plaza
入口处

2 Guard House
保安室

3 Sculpture
雕塑展示

4 Grand Entrance
大堂

5 Changing Room with
Steam and Sauna Facilities
(Basement)
备有蒸汽和桑拿设施的
更衣室(地下层)

6 Fitness Terrace
健身露台

7 Leisure Garden
绿意花园

8 Courtside
庭院

9 Tennis Court
网球场

10 Playground
游乐场

11 Wooded Trail
悠闲小径

12 Garden Lounge
花园休息亭

13 Reflective Garden
静思花园

14 The Pavilion
阁亭

15 Fitness Studio
健身房

16 Putting Green
高尔夫球推杆练习区

17 Shower Area
淋浴处

18 Gym Pool
健身泳池

19 BBQ by the Lawn
草坪美食烧烤区

20 Play Pool
嬉戏池

21 Jets Pool
按摩池

22 Grand Lawn
葱绿草坪

23 Cabana
休闲小屋

24 Spa Pool
水疗池

25 50m Grand Pool
50米泳池

26 Pool Lounge
池畔休息区

27 Club Gramercy
会所

28 Viewing Deck
观景台

29 BBQ by the Woods
葱绿美食烧烤区

Please note that the boundary lines of the units set out herein are not a representation of the boundary lines of the actual units. Unit type shading only applies to typical units. Positions of sculptures are illustrative and subject to change.

以上公寓单位属呈现图，只作为说明用途。图中所示之各单位的界限，不得被视为实际单位的实际划分界限。颜色划分出的单位类型仅限于标准单位。雕塑的位置仅供参考，可因情况所需而更改。

SCHEMATIC DIAGRAM

~ 楼层示意图 ~

57 GRANGE ROAD SINGAPORE 249569
57 格兰芝路 新加坡 249569

SOUTH TOWER 南楼

NORTH TOWER 北楼

UNIT LEVEL	09	08	07	06	04	03	02	01
24	P1-23 (#23-08)		P2-23 (#23-06)		P2-23 (#23-03)		P1-23 (#23-01)	
23	P1-23 (#23-08)		P2-23 (#23-06)		P2-23 (#23-03)		P1-23 (#23-01)	
22	C-22	B2-22	A-22	BI-22	BI-22	A-22	B2-22	C-22
21	C-21	B2-21	A-21	BI-21	BI-21	A-21	B2-21	C-21
20	C-20	B2-20	A-20	BI-20	BI-20	A-20	B2-20	C-20
19	C-19	B2-19	A-19	BI-19	BI-19	A-19	B2-19	C-19
18	C-18	B2-18	A-18	BI-18	BI-18	A-18	B2-18	C-18
17	C-17	B2-17	A-17	BI-17	BI-17	A-17	B2-17	C-17
16	C-16	B2-16	A-16	BI-16	BI-16	A-16	B2-16	C-16
15	C-15	B2-15	A-15	BI-15	BI-15	A-15	B2-15	C-15
14	C-14	B2-14	A-14	BI-14	BI-14	A-14	B2-14	C-14
13	C-13	B2-13	A-13	BI-13	BI-13	A-13	B2-13	C-13
12	C-12	B2-12	A-12	BI-12	BI-12	A-12	B2-12	C-12
11	C-11	B2-11	A-11	BI-11	BI-11	A-11	B2-11	C-11
10	C-10	B2-10	A-10	BI-10	BI-10	A-10	B2-10	C-10
9	C-9	B2-9	A-9	BI-9	BI-9	A-9	B2-9	C-9
8	C-8	B2-8	A-8	BI-8	BI-8	A-8	B2-8	C-8
7	C-7	B2-7	A-7	BI-7	BI-7	A-7	B2-7	C-7
6	C-6	B2-6	A-6	BI-6	BI-6	A-6	B2-6	C-6
5	C-5	B2-5	A-5	BI-5	BI-5	A-5	B2-5	C-5
4	C-4	B2-4	A-4	BI-4	BI-4	A-4	B2-4	C-4
3	C-3	B2-3	A-3	BI-3	BI-3	A-3	B2-3	C-3
2	C-2	B2-2	A-2			A-2	B2-2	C-2
1	C-1(PES)	B2-1(PES)					B2-1A(PES)	C-1(PES)
BI	CARPARK							

TYPE A
2-BEDROOM
+ STUDY

单位类型A
2卧室
+ 书房单位

TYPE B
3-BEDROOM

单位类型B
3卧室单位

TYPE C
4-BEDROOM

单位类型C
4卧室单位

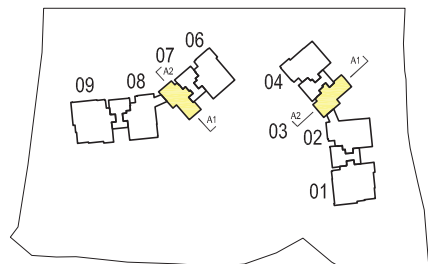
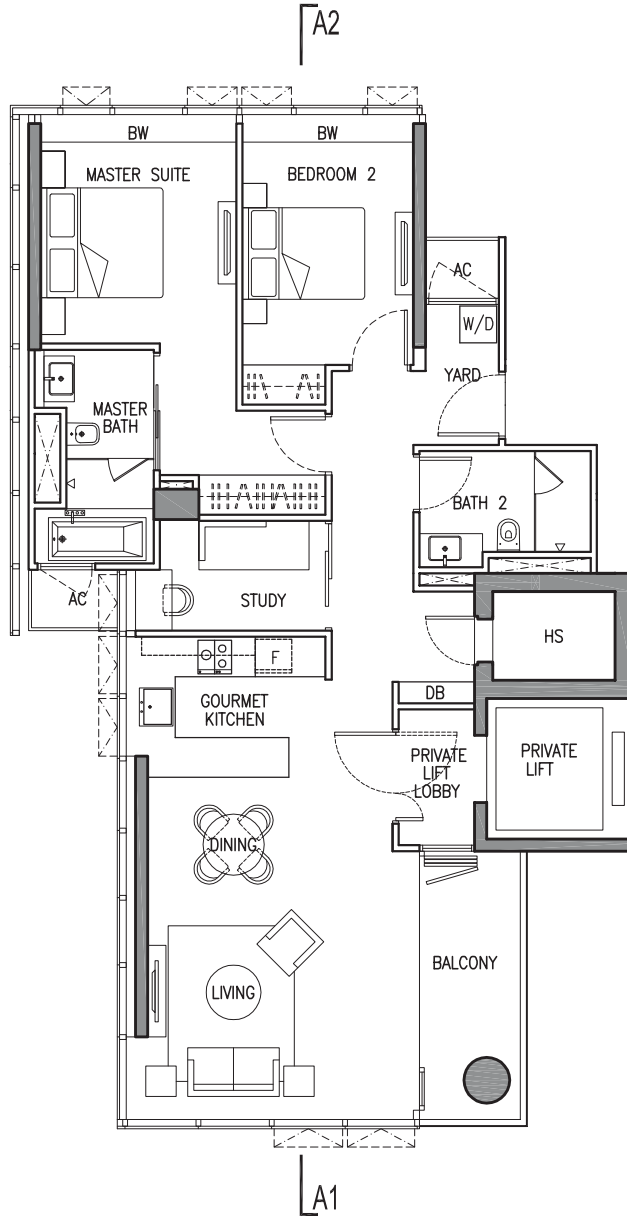
TYPE PH
PENTHOUSE
(5-BEDROOM)

顶层跃层单位类型
顶层跃层单位
(5卧室)

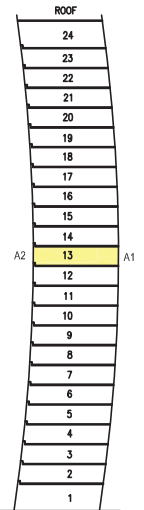
TWO-BEDROOM + STUDY
2 卧室 + 书房 单位

TYPE A-13

118 sq m (1,270 sq ft)
#13-03
#13-07



KEY PLAN (NOT TO SCALE)



KEY PLAN SECTION

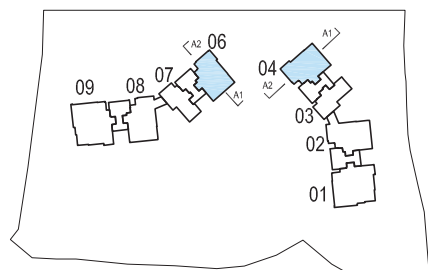
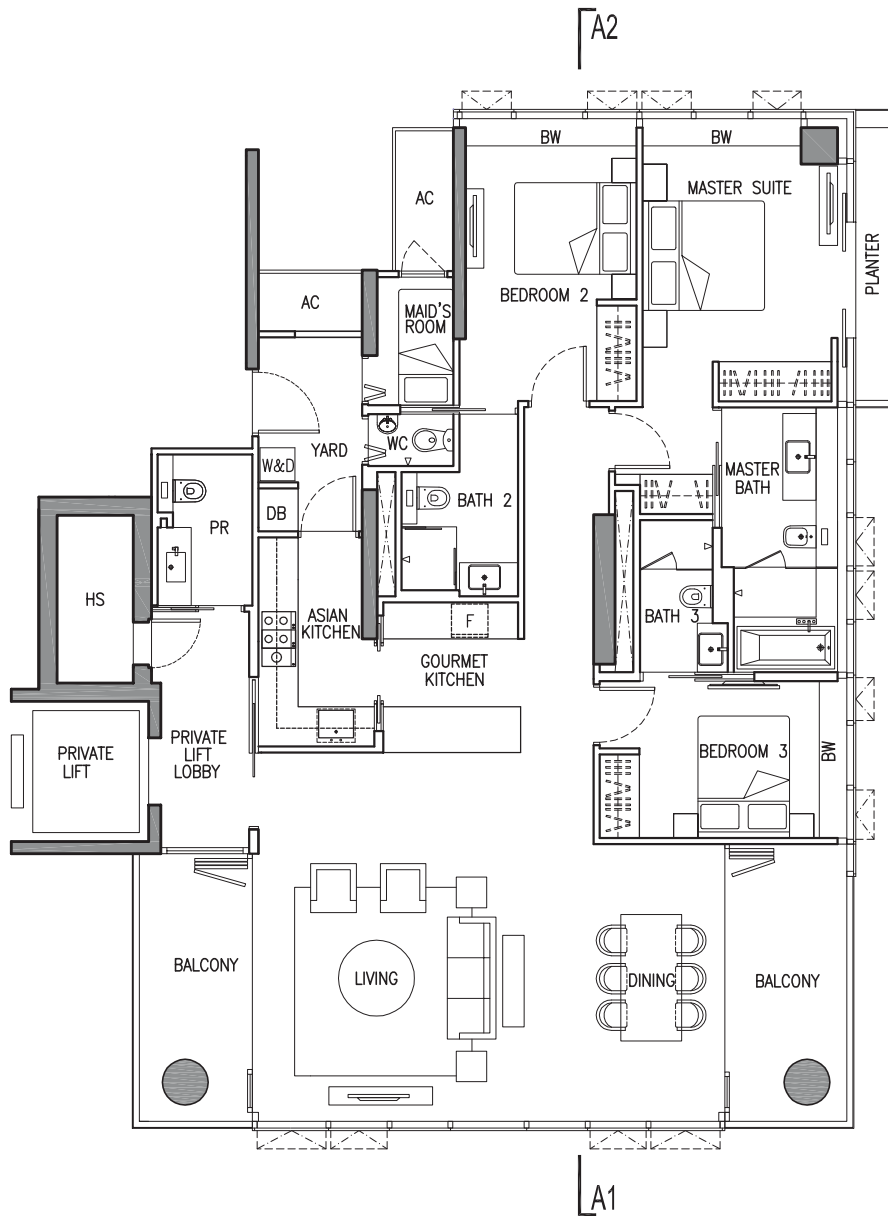
Note: Unit floor plans are not drawn to scale.
备注：单位平面图不按比例绘制，仅供参考。

A1 & A2 denote the section line & the type of facade of the building each unit is having.

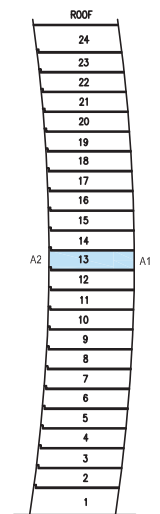
THREE-BEDROOM
3 卧室单位

TYPE BI-13

184 sq m (1,981 sq ft)
#13-04
#13-06



KEY PLAN (NOT TO SCALE)



KEY PLAN SECTION

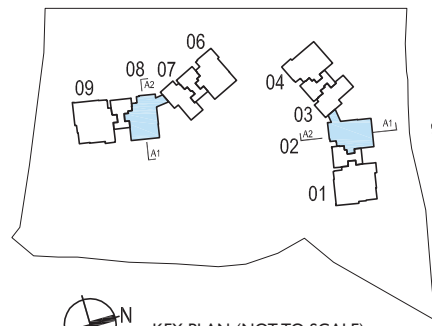
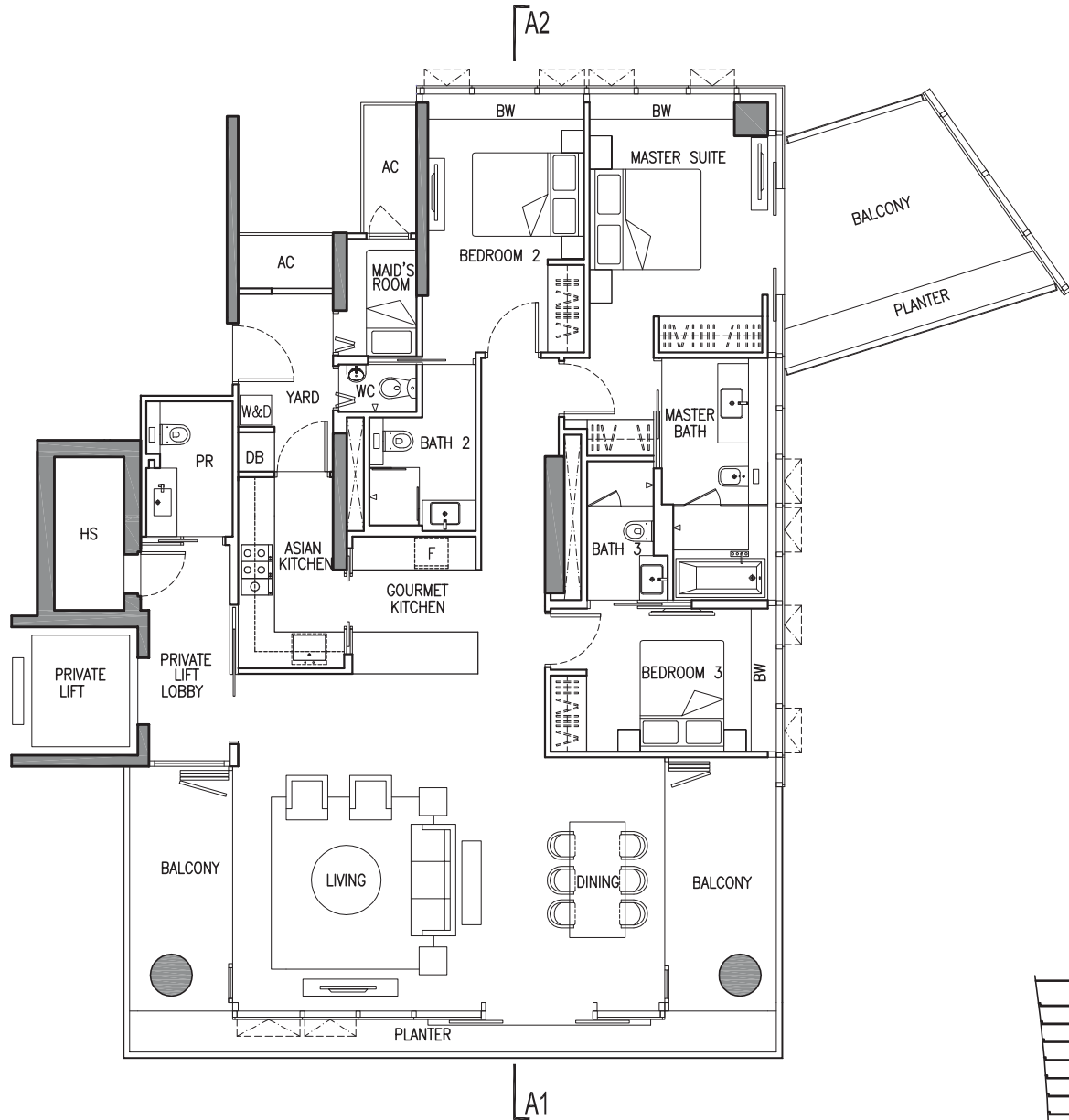
Note: Unit floor plans are not drawn to scale.
备注：单位平面图不按比例绘制，仅供参考。

A1 & A2 denote the section line & the type of facade of the building each unit is having.

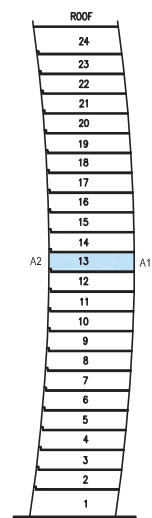
THREE-BEDROOM
3 卧室单位

TYPE B2-13

205 sq m (2,207 sq ft)
 #13-02
 #13-08



KEY PLAN (NOT TO SCALE)



KEY PLAN SECTION

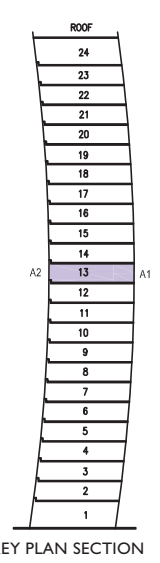
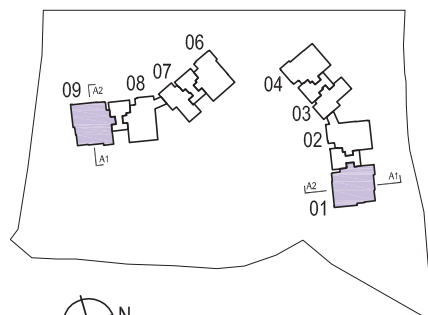
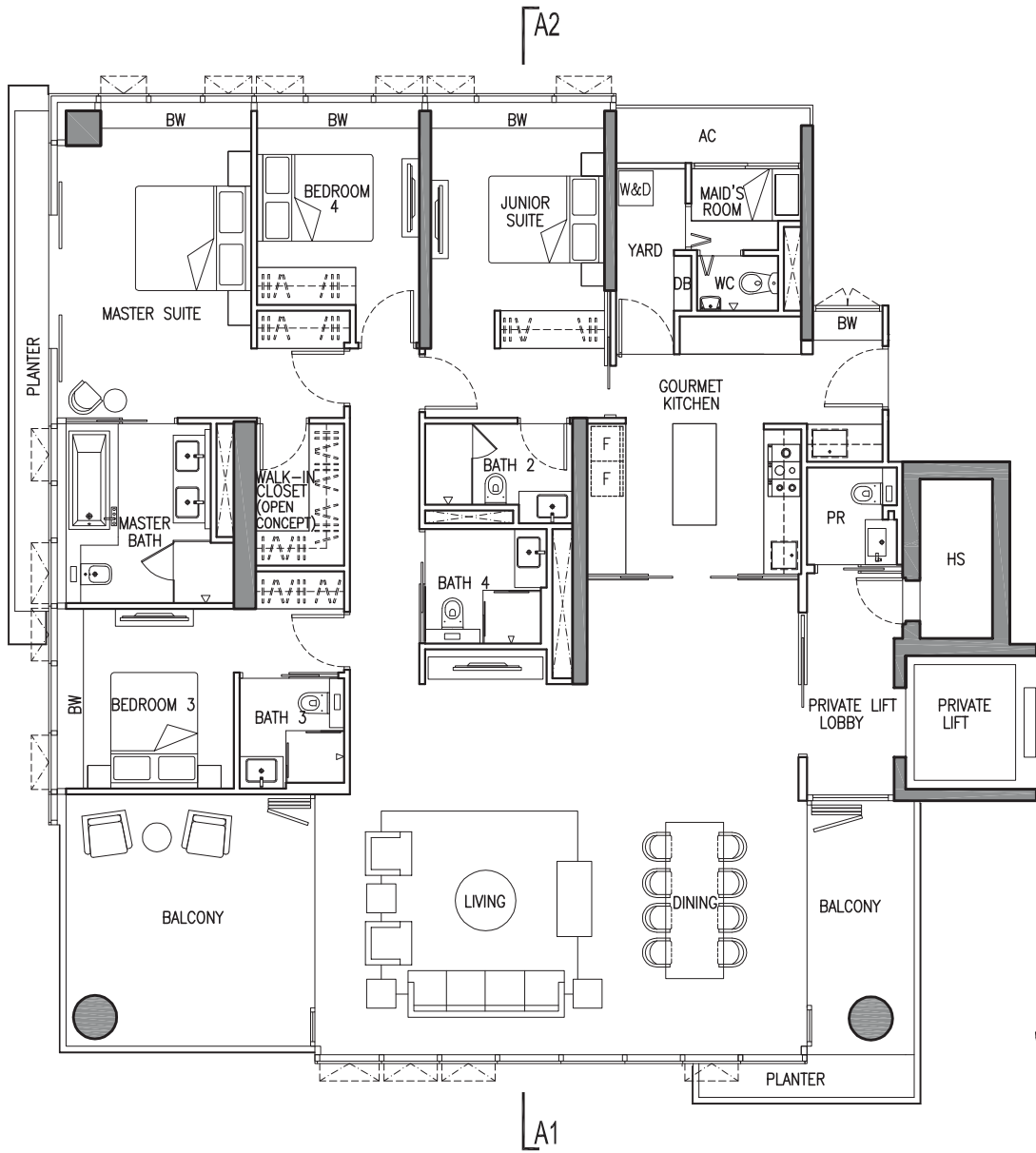
Note: Unit floor plans are not drawn to scale.
 备注：单位平面图不按比例绘制，仅供参考。

A1 & A2 denote the section line & the type of facade of the building each unit is having.

FOUR-BEDROOM
4卧室单位

TYPE C-13

250 sq m (2,691 sq ft)
#13-01
#13-09



Note: Unit floor plans are not drawn to scale.
备注：单位平面图不按比例绘制，仅供参考。

 KEY PLAN (NOT TO SCALE)

A1 & A2 denote the section line & the type of facade of the building each unit is having.



CITY DEVELOPMENTS LIMITED
城市发展有限公司

**SINGAPORE'S TRUSTED PROPERTY
PIONEER SINCE 1963**

~ 新加坡房产先驱 优良信誉始于1963年 ~

As a leading property pioneer, City Developments Limited (CDL) holds an impressive track record with over 36,000 luxurious and quality homes across diverse market segments. With renowned landmarks including The Sail @ Marina Bay, One Shenton and St. Regis Residences, Singapore to its name, CDL has made a distinctive imprint on Singapore's skyline. Its enduring spirit of innovation, craft and excellence has made CDL one of Singapore's largest landlords today. CDL is also a global company with a prominent presence in 94 locations across 26 countries.

作为新加坡卓越的发展商之一，城市发展有限公司已建造超过3万6千间豪华优质公寓。著名地标如滨海舫、珊顿一号及瑞吉雅居，城市发展有限公司已为新加坡的天际线又添几分璀璨。城市发展有限公司对卓越、革新以及精工的不懈追求，使该公司成为新加坡现今规模最大的房地产企业之一。作为盛名远扬的国际企业，城市发展有限公司在横跨二十六国的九十四地点亦占有一席之地。

**For the pleasure of ownership, please email enquiries@cdl.com.sg or call
欲拥有此豪华公寓，请发电邮至enquiries@cdl.com.sg 或拨**

**Singapore 新加坡:
(65) 6877 1818**

**36 Robinson Road #20-01 City House Singapore 068877
www.cdlhome.com.sg**

Reasonable care has been taken in the preparation of this brochure, and the construction of the scale model and the show-flat but the developer does not warrant the accuracy thereof. The statements, information and depictions in this brochure, the scale model and the show-flat (collectively "the Collaterals") may not be relied upon as statements or representations of fact, and they are not intended to form any part of the contract for the sale of the housing units. In particular, visual representations such as pictures and drawings are artists' impressions only, and are not representations of fact. All information contained in the Collaterals, including depictions or descriptions of materials, fittings, equipment, finishes, installations and appliances, and all plans and specifications, are current at the time of printing, but are subject to such changes as may be required by the developer or the relevant authorities. The brand, colour and model of all materials, fittings, equipment, finishes, installations and appliances will be supplied in accordance with the specifications in the sale and purchase agreement and shall be provided subject to the developer's architect's selection, market availability and the sole discretion of the developer. The floor areas stated in the brochure are approximate measurements and subject to final survey. The sale and purchase agreement embodies all the terms and conditions of contract between the developer and the purchaser and the developer shall not be bound by any representations, warranties, promises, inducements or statements of intention, whether written or oral, made by the developer's representatives and/or agents, which are not set forth in the sale and purchase agreement.

在制作本宣传册、缩尺模型及建造示范单位(以下统称为“营销附属品”)时，已合理采取谨慎措施，但供应商恕不保证营销附属品的精确性。营销附属品所含之陈述、信息和描述不可作为实际陈述或事实的依据，且无意作为该住宅单位销售合同的任何构成部分。尤其是视觉图像与绘图，均限于艺术构想图，并不代表相关实物。所提供的一切材料、配件、设备、饰面、安装及设施之品牌、颜色和型号，全取决于供应商建筑师的选择、市场供求情况，且由供应商全权决定。所有营销附属品中所提及的设备、材料、装置、饰面、安装、器具描述、蓝图及规格信息，准确性截至本宣传册付印时为止，故或将因供应商或相关机关的要求而有所更改。在示范单位所示的建筑面积仅为估算，实际测量数字须待最终调查方可确定。销售与购屋契约上的条款与条规属发展商与购屋者终极的合法约定。发展商代表、售屋经纪的书面或口头上的保证、承诺及约定，不论其用意，只要不附在销售与购屋契约中，将不得视为合法约定。

Vendor: Aston Properties Pte Ltd (UEN No. I99404375K) • Tenure of Land: Estate in Fee Simple (Freehold) • Lot No.: I174X TS 24 at Grange Road • Developer Licence No.: C0581 • Expected Date of Vacant Possession: 31 March 2017 • Expected Date of Legal Completion: 31 March 2020

This brochure is printed on eco-friendly paper. 本宣传册是以环保纸张印制。