

MOOI

RESIDENCES

Developer: WENUL HL PTE LTD

FACT SHEET

Project information	PROPOSED ERECTION OF 5-STOREY RESIDENTIAL FLATS WITH AN ATTIC (24 UNITS) DEVELOPMENTS WITH A SWIMMING POOL, COMMUNAL FACILITIES AND SUB-BASEMENT CARPARK AT 139, 141 HOLLAND ROAD (BUKIT TIMAH PLANNING AREA)
Mukim/Lot No	LOT 04064X, 04068W MK 04
Address	139 Holland Road
Development Name	MOOI RESIDENCES
Tenure	Freehold
Site Area	1235.8 SQM

No of Units

Type	Description	No. of Units
A-P	2 Bedroom PES	1
A	2 Bedroom	3
B-P	2 Bedroom PES	1
B	2 Bedroom	3
B1	2 Bedroom	3
C-P	3 Bedroom PES	1
C	3 Bedroom	3
C1-P	3 Bedroom PES	1
C1	3 Bedroom	4
PH1	3 Bedroom PRT	2
PH2	4 Bedroom PRT	1
PH3	3+1 Bedroom PRT	1
	TOTAL	24

*PES= Private Enclosed Space, PRT= Private Roof Terraces

Car Parking 19 lots & 1 accessible lots

Bicycle Parking 6 lots

Facilities

Basement

1. Bicycle Lots

1st Storey

1. Water Feature
2. Infinity Lap Pool (25m length x 4.2m width)
3. Jacuzzi
4. Spa Pool
5. Pavilion
6. Sun Deck
7. Gym
8. Outdoor Fitness
9. Landscape

Attic Storey

1. Gourmet Terrace
2. Open Terrace with BBQ



Site Information

Additional Item

- (a) Kitchen: Top and bottom Kitchen cabinets with Quartz countertop and glass backsplash complete with kitchen sink, cooker hood, hob, built-in oven.
- (b) Bathrooms: Cabinet with Quartz vanity countertop, cabinet with mirror, glass shower cubicle
- (c) Kitchen appliances (Type A, A-P, B, B-P, B1): 1 microwave oven, 1 integrated fridge, 1 hood, 1 induction hob, 1 washing machine cum dryer.
- (d) Kitchen appliances (Type C, C-P, C1, C1-P, PH1, PH2, PH3): 1 built in oven, 1 free standing fridge, 1 hood, 1 gas hob, 1 washing machine cum dryer.
- (d) Wardrobe : Pole system and/or wardrobe set in laminated finish to all units.
- (e) Air-Conditioning : Wall-mounted split-unit air-conditioning system to Liv, Din, Studio, Study, Loft and all Bedrooms where applicable.
- (f) Hot Water Supply : Hot water supply shall be provided to Kitchen and Bathrooms
- (g) Sanitary wares & Fittings: Shower set, basin with mixer, wall hung WC

Ceiling Height

TYPE	A-P	B-P	C-P	C1-P	A	B	B1	C	C1	C1 (5th Storey)	PH1	PH2	PH3
Living/Dining	4.70	4.70	4.70	4.70	3.25	3.25	3.25	3.25	3.25	3.25	6.70	6.70	6.70
M. Bedroom	4.70	4.70	4.70	4.70	3.25	3.25	3.25	3.25	3.25	3.25	3.25	3.25	3.25
Bedroom 1	4.70	4.70	4.70	4.70	3.25	3.25	3.25	3.25	3.25	3.25	3.25	3.25	3.25
Bedroom 2	-	-	4.70	4.70	-	-	-	3.25	3.25	3.25	3.25	3.25	3.25
Bedroom 3	-	-	-	-	-	-	-	-	-	-	-	3.25	-
Study Room	-	-	-	-	-	-	-	-	-	-	-	-	3.25
Corridor	3.00	3.00	3.00	3.00	2.70	2.70	2.70	2.70	2.70	2.70	2.70	2.70	2.70
Pri. Lift Access	-	-	3.00	3.00	2.70	2.70	2.70	2.70	2.70	2.70	2.70	2.70	2.70
Kitchen	3.00	3.00	2.40	3.00	2.70	2.70	2.70	2.70	2.70	2.70	2.70	2.70	2.70
Yard	-	-	3.00	-	-	-	-	2700	-	-	-	-	2.70
M. Bathroom	2.50	2.50	2.50	2.50	2.50	2.50	2.50	2.50	2.50	2.50	2.50	2.50	2.50
Bath 1	2.50	2.50	2.50	2.50	2.50	2.50	2.50	2.50	2.50	2.50	2.50	2.50	2.50
Bath 2	-	-	-	-	-	-	-	-	-	-	-	-	2.50
HS	2.95	2.95	2.95	2.95	2.95	2.95	2.95	2.95	2.95	2.80	2.80	2.80	2.80
Balcony	-	-	-	-	3.25	3.25	3.25	3.25	3.25	3.25	3.25	3.25	3.25
PES	4.70	4.70	4.70	4.70	-	-	-	-	-	-	-	-	-
PRT	-	-	-	-	-	-	-	-	-	-	3.25	3.25	3.25

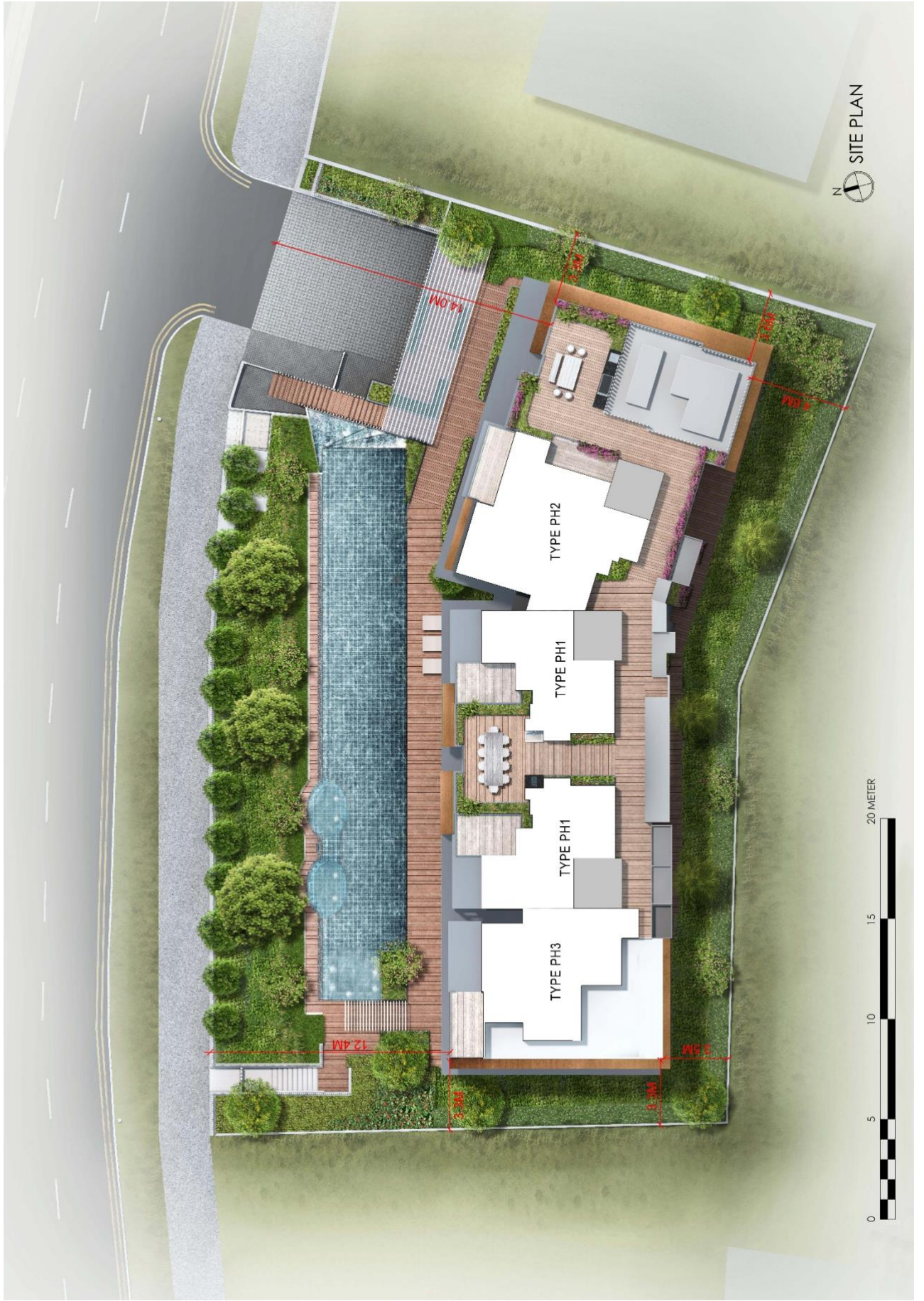
Note : 1. Localised bulkhead and/or pelmet at 2.4m except otherwise stipulated;
2. * Localised ceiling height below staircase at 1.5m;

Professional

Architect	Metaphor Design + Architecture Pte Ltd
Quantity Surveyor	BCM Consultants Pte Ltd
Main Contractor	East Asia Engineering & Construction Pte Ltd
Civil & Structure Engineer	KCL Consultants Pte Ltd
Mechanical & Electrical Engineer	ELEAD Associates Pte Ltd

Legal

Solicitor	
BP Approval	A1525-00014-2018-BP01
Estimated date of Legal Completion	15 th October 2025



N
SITE PLAN

0 5 10 15 20 METER